



PRECEPTOR BITES: PRECEPTOR BEST PRACTICES

SAMUEL LE CHURCH, MD, MPH, FAAFP

WEBINAR WILL BEGIN PROMPTLY AT NOON.

1



MARCH 9, 2023

PRECEPTOR BITES:

PRECEPTOR BEST PRACTICES

SAMUEL LE CHURCH, MD, MPH, FAAFP

WELCOME!

ERIN MUNDY, MPA
DIRECTOR, COMMUNITY BASED TRAINING PROGRAMS
GEORGIA STATEWIDE AHEC NETWORK

2

CME STATEMENTS

Accreditation Statement

This activity has been planned and implemented in accordance with the accreditation requirements and policies of the Accreditation Council for Continuing Medical Education (ACCME) through joint providership of Mercer University School of Medicine and Southwest Georgia AHEC. The Mercer University School of Medicine is accredited by the ACCME to provide continuing medical education for physicians.

Credit

The Mercer University School of Medicine designates this internet based educational activity for a maximum of 1.0 AMA PRA Category 1 Credit(s)™. Physicians should only claim credit commensurate with the extent of their participation in the activity.

CE STATEMENTS

Nurses:

The Georgia Board of Nursing deems Southwest Georgia Area Health Education Center (SOWEGA-AHEC) as an approved provider for nursing continuing education (CE). This activity is approved for 1.0 contact hour towards the continuing education competency requirement for Georgia nursing licensure renewal. No partial credit offered.
Activity #2023-02.

EMS Instructors/Providers:

This course has received Georgia Office of EMS and Trauma approval for continuing education credit for 1.0 hour. GA-2023-PROV-05445 & GA-2023-INST-DUAL-074

Note: Submission of registration information, attendance and completed evaluation/successful post-test required for CME/CE certificates.

3

4

PLANNERS

Doug Patten, MD - Activity Director
SOWEGA-AHEC Board Member
Augusta University, Medical College of Georgia, Associate Dean
Southwest Clinical Campus

D. Michelle Huskey, MS, RRT-NPS - Activity Coordinator
SOWEGA-AHEC, Continuing Education & Distance Learning Coordinator

Sandra Daniel, PhD, RN
SOWEGA-AHEC Board Member
Georgia Southwestern State University, Dean, School of Nursing

PRESENTER

Samuel Le Church, MD, MPH, FAAFP

Clinical Title and Affiliation
Family Medicine Physician, Synergy Health, Inc.

Academic Affiliations
Clinical Assistant Professor, MCG/UGA Medical Partnership Campus,
Department of Family Medicine at the Medical College of Georgia
Associate Professor, Mercer University School of Medicine, Department of Community Medicine
Adjunct Clinical Assistant Professor, University of Georgia College of Public Health
Core Faculty, Northeast Georgia Medical Center, Family Medicine Residency
Affiliate Faculty, Physician Assistant Program, Indiana State University
Adjunct Faculty, North Georgia Technical College

5

6

DISCLOSURES & COMMERCIAL SUPPORT

- All planners & presenter disclosed no potential conflicts of interest at this time.
- No commercial support provided for this educational activity.

LEARNING OBJECTIVES

- Distinguish adopted best practices and efficient teaching methods for preceptors
- Implement strategies used to engage student learning during clinical rotations

7

8

PRECEPTOR BEST PRACTICES

SAMUEL L. CHURCH, MD, MPH, FAAP

GEORGIA STATEWIDE AHEC – PRECEPTOR BITES SERIES

MARCH 9, 2023

9

RANDOM QUIZ QUESTION

- When learning to hit a baseball with various pitches (fastball, curveball, slider), which approach would yield better results when preparing for a game?
 - A – Practice hitting each pitch individually
 - or
 - B – Practice all pitches randomly

10

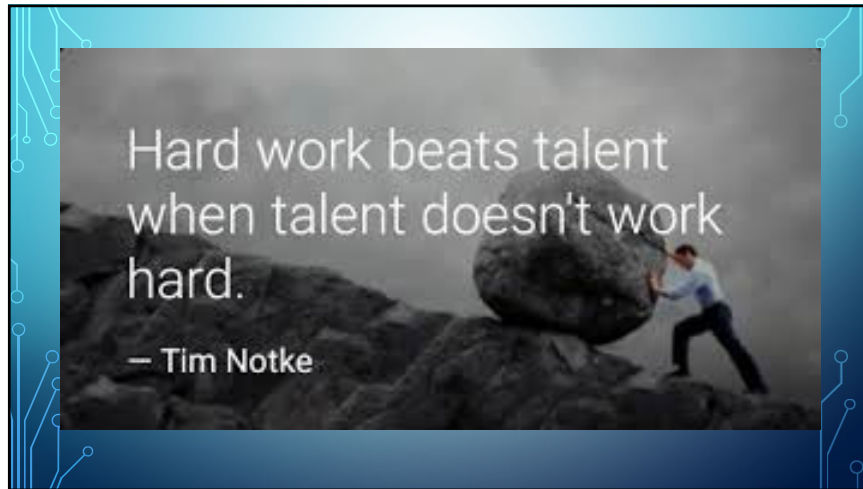


11

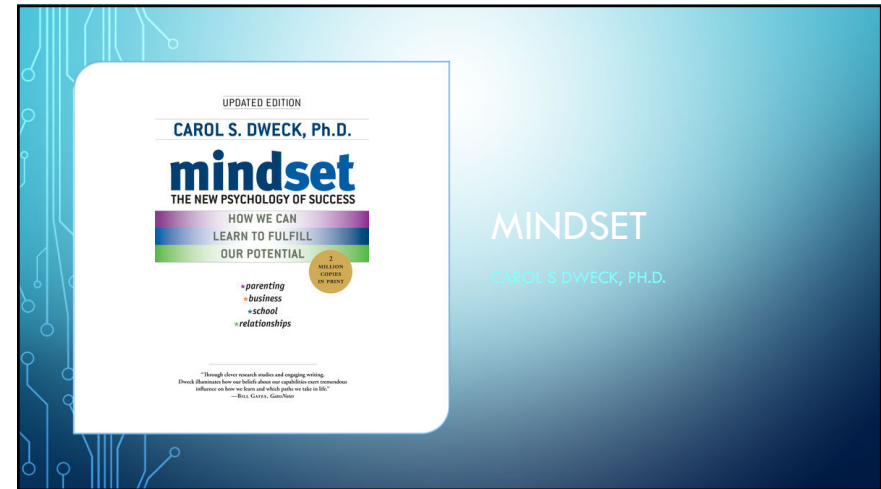
DON'T PUT YOUR T/F QUESTIONS IN THE CHAT

- Intelligence is a trait that you cannot change.
- I feel bad about myself when I make a mistake and my confidence suffers.
- Mistakes are valuable learning opportunities.
- I enjoy trying new things and taking on new challenges
- Only a few people are extremely talented and they are born with it.
- The harder you work at something, the more skilled you'll become.
- People rarely change much; you simply are a certain kind of person.

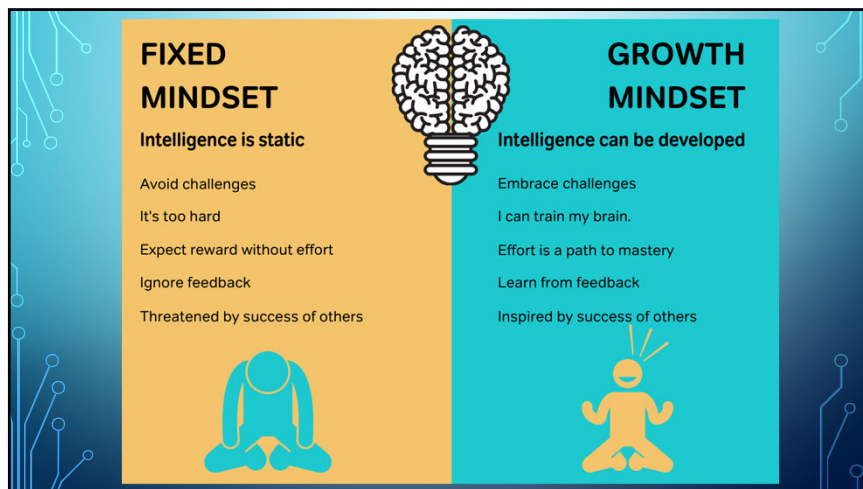
12



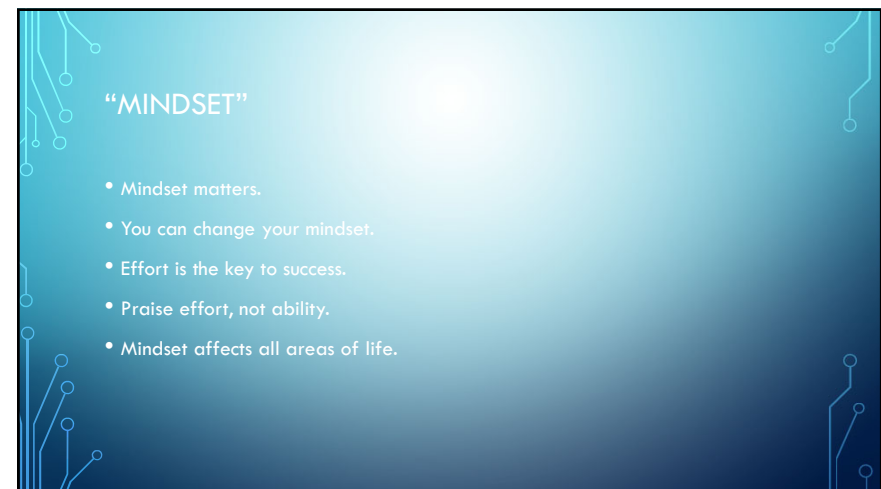
13



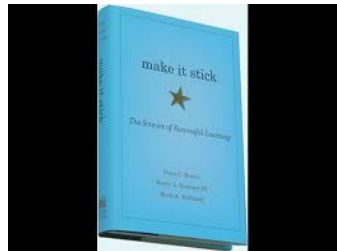
14



15



16



MAKE IT STICK

The Science of Successful Learning

Peter C Brown

Henry L Roediger III

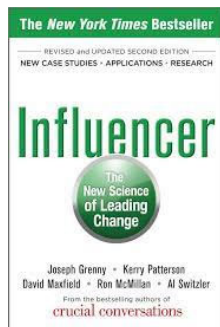
Mark A McDaniel

MAKE IT STICK

- Spaced repetition
- Interleaving
- Retrieval and active recalling
- Make connections
- Reflect

17

18



- Identify vital behaviors
- Be aware of positive and negative influencers
- Use 6 sources of influence
- There is power in storytelling
- Focus on positive feedback

- Embrace a growth mindset. And encourage a growth mindset
- Use “make it stick” principles
- Be an intentional INFLUENCER. Teach your learners to be INFLUENCERS

19

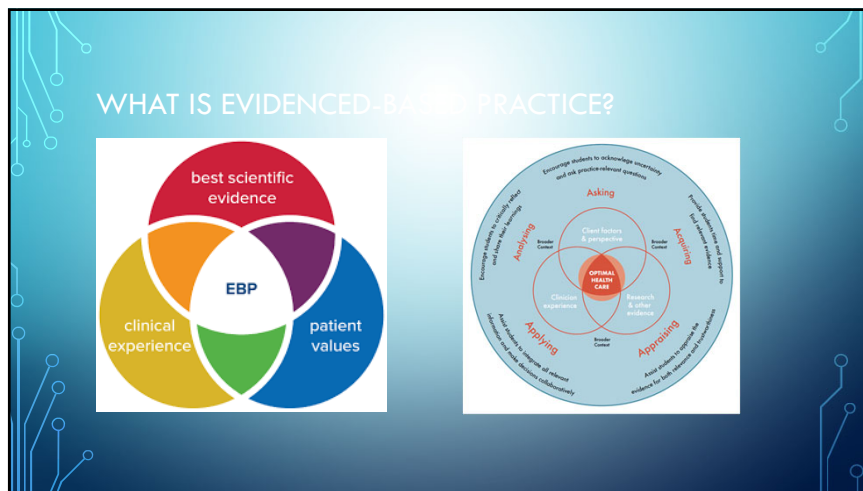
20



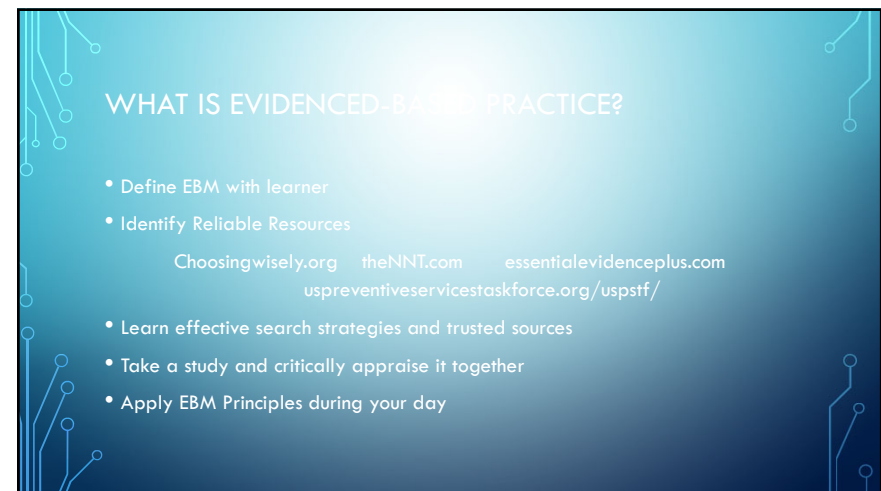
21



22



23



24

BEST PRECEPTOR PRACTICES

- Active Learning
- Evidence-Based Medicine
- Individualized Learning
- Model and Encourage Collaboration, Empathy, Servant Leadership
- Feedback and Evaluation

25

FEEDBACK METHODS AND RESOURCES

Feedback sandwich

Be specific

Focus on behavior instead of traits

Provide actionable tips

USE a growth mindset

Reflective approach

Chart-Stimulated Recall

Direct Observation with Feedback (DOWF)

One-Minute Preceptor

FACT Method

STFM.org

"Thanks For The Feedback"

26

BEST PRECEPTOR PRACTICES

- Would you prefer that students leave their phone or tablet at their desk OR have it out during patient encounters?
- Answer in chat – Hide or Show

27

BEST PRECEPTOR PRACTICES

- Active Learning
- Evidence-Based Medicine
- Individualized Learning
- Model and Encourage Collaboration, Empathy, Servant Leadership
- Feedback and Evaluation
- Use Technology

28

BONUS STRATEGIES

- Learn from the learners.
- Highlight unusual techniques
- Make it personal.
- Help them feel relevant.

29

FINAL THOUGHTS

- Have a growth mindset. Encourage a growth mindset.
- Practice what you preach.
- "Make it stick." If it's important, reference it on a regular basis. Mix it up.
- Leverage evidence and resources.
- Give thoughtful, varied, and frequent feedback.
- Be selfless and genuine.

30

Precept like you might need the
student for your own care someday.

31

QUESTIONS AND DISCUSSION

32

EVALUATION



Live Webinar Participants: Submission of registration information, attendance and completed evaluation required for CME/CE certificates.

OnDemand Webinar Participants: Submission of registration information, attendance and completed evaluation/successful post-test required for CME/CE certificates.

Evaluation link was provided in your email registration confirmation.

Thank you!

Erin Mundy, MPA
Director, Community Based Training Programs
Georgia Statewide AHEC Network

Want to connect with other preceptors? Join our Facebook group!

