


**POPULATION HEALTH SERIES:**  
*Addressing Social Determinants of Health*



Lisa Carhuff, MSN, RN  
 Program Manager  
 HomeTown Health, LLC

1

---

---

---

---


---

---

---

---

**CE STATEMENT**



The **Georgia Board of Nursing** deems **Southwest Georgia Area Health Education Center (SOWEGA-AHEC)** as an approved provider for nursing continuing education (CE). This activity is approved for **1.0** contact hour towards the continuing education competency requirement for Georgia nursing licensure renewal. No partial credit offered. Activity #2020-03a.

**Note:** Submission of registration information, attendance and completed evaluation/successful post-test required for Nursing continuing education certificates.

2

---

---

---

---

---

---

---

---

**DISCLOSURES & COMMERCIAL SUPPORT**

Planners & presenter disclosed no potential conflicts of interest at this time.

No commercial support provided for this educational activity.

3

---

---

---

---

---

---

---

---

LEARNING OUTCOMES

- Describe how "place matters" - where we live can determine how well we live and is a significant factor of life expectancy
- Define health equity
- Identify stakeholder engagement needed for addressing social determinants of health

4

---

---

---

---

---

---

---

---

**SOCIAL DETERMINANTS OF HEALTH**

Health starts where we live, work, learn and play

Health is influenced by more than a disease and its affects on body function and structure or health-related behaviors

Social and economic opportunities that affect people's ability to "live, learn, work, play, worship, and age... affect a wide range of health, functioning, and quality-of-life outcomes and risks"

5

---

---

---

---

---

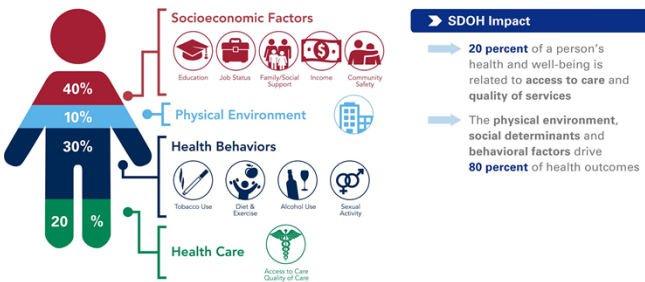
---

---

---

**IMPACT OF SOCIAL DETERMINANTS OF HEALTH**

Social determinants of health have tremendous affect on an individual's health regardless of age, race, or ethnicity.



Source: Institute for Clinical Systems Improvement Going Beyond Clinical Work: Solving Complex Problems, 2018 Graphic designed by ProMedica

©2018 American Hospital Association

6

---

---

---

---

---

---

---

---

### IMPACT OF SOCIAL DETERMINANTS OF HEALTH

Economic Stability	Neighborhood and Physical Environment	Education	Food	Community and Social Context	Health Care System
Employment Income Expenses Debt Medical bills Support	Housing Transportation Safety Parks Playgrounds Walkability Zip code / geography	Literacy Language Early childhood education Vocational training Higher education	Hunger Access to healthy options	Social integration Support systems Community engagement Discrimination Stress	Health coverage Provider availability Provider linguistic and cultural competency Quality of care

**Health Outcomes**  
Mortality, Morbidity, Life Expectancy, Health Care Expenditures, Health Status, Functional Limitations

**KFF**

7

---

---

---

---

---

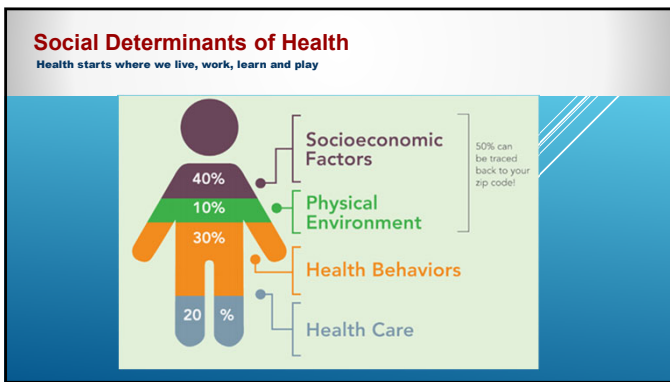
---

---

---

---

---



8

---

---

---

---

---

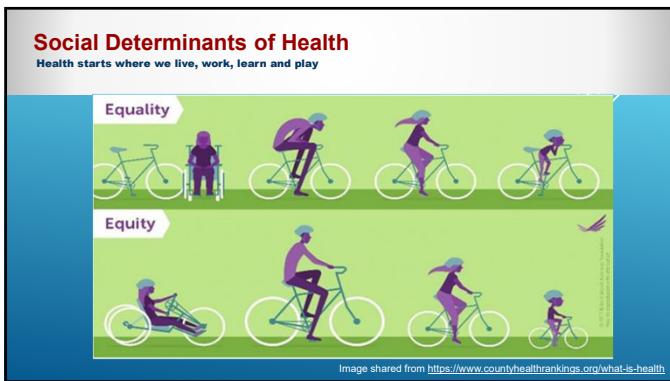
---

---

---

---

---



9

---

---

---

---

---

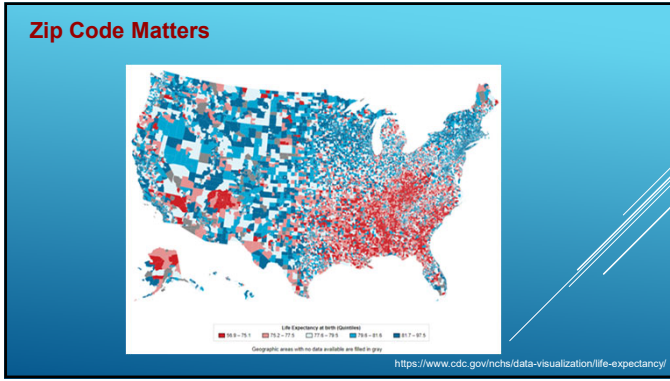
---

---

---

---

---



10

---

---

---

---

---

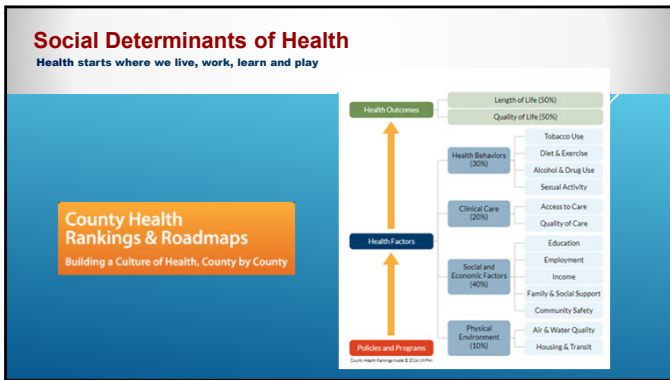
---

---

---

---

---



11

---

---

---

---

---

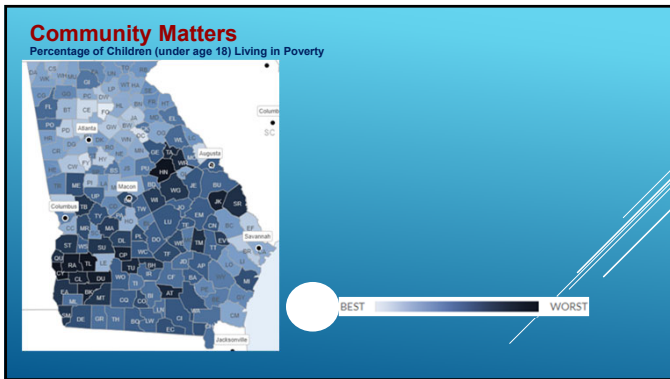
---

---

---

---

---



12

---

---

---

---

---

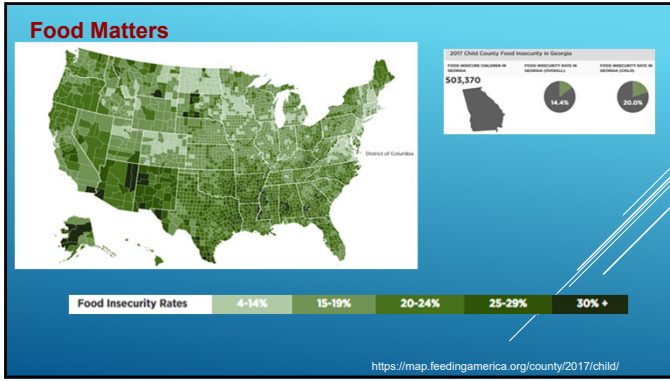
---

---

---

---

---



13

---

---

---

---

---

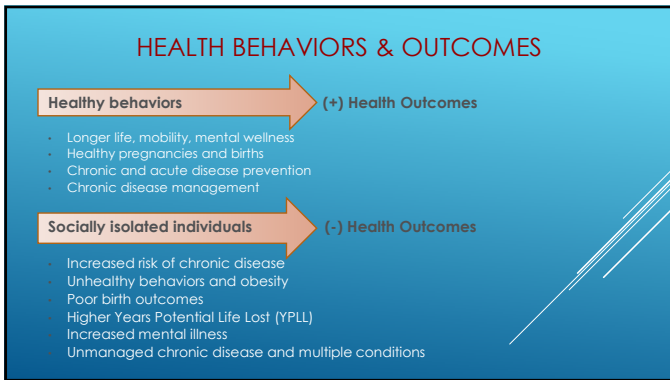
---

---

---

---

---



14

---

---

---

---

---

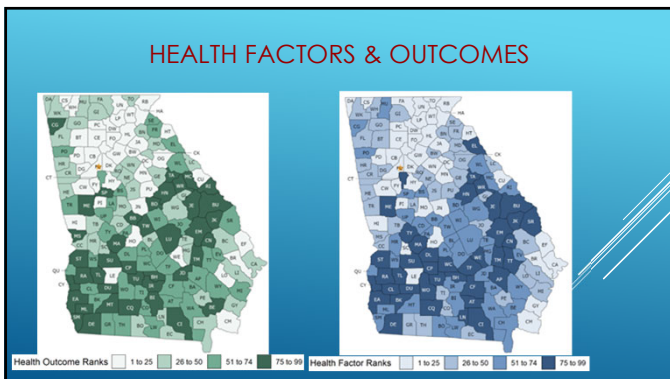
---

---

---

---

---



15

---

---

---

---

---

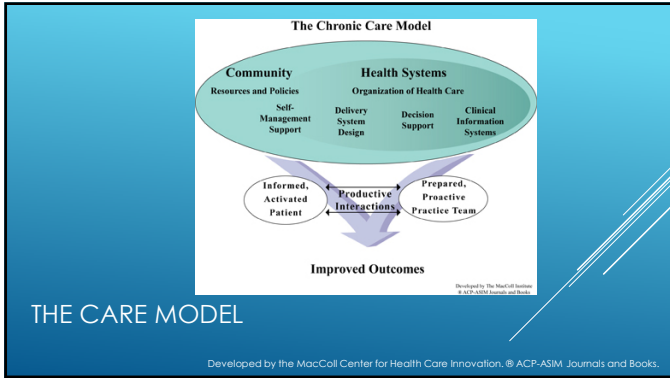
---

---

---

---

---



16

---

---

---

---

---

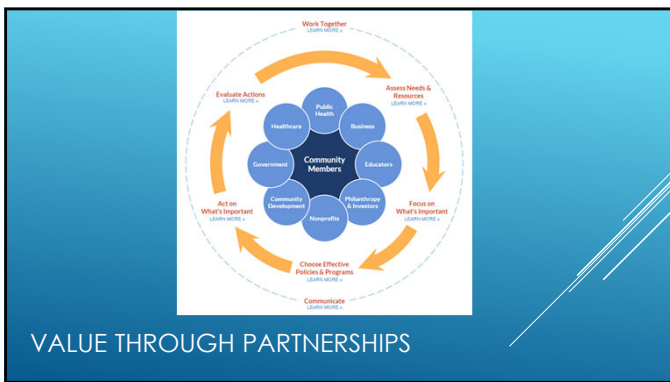
---

---

---

---

---



17

---

---

---

---

---

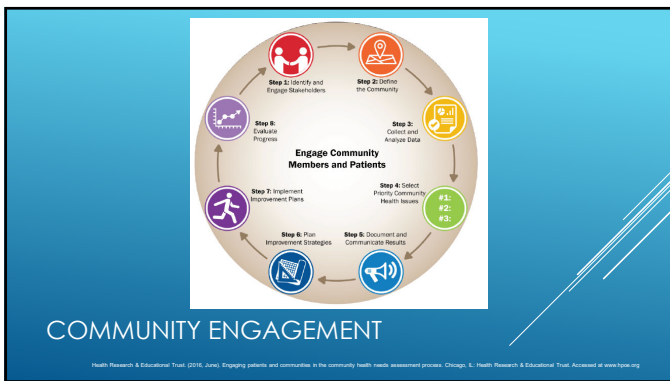
---

---

---

---

---



18

---

---

---

---

---

---

---

---

---

---

LEARNING OUTCOMES

- Describe how "place matters" - where we live can determine how well we live and is a significant factor of life expectancy
- Define health equity
- Identify stakeholder engagement needed for addressing social determinants of health

19

---

---

---

---

---

---

---

---

EVALUATION

Submission of registration information, attendance and completed evaluation/successful post-test required for CE certificates.

<https://www.surveymonkey.com/r/pophealthdemand7>

20

---

---

---

---

---

---

---

---